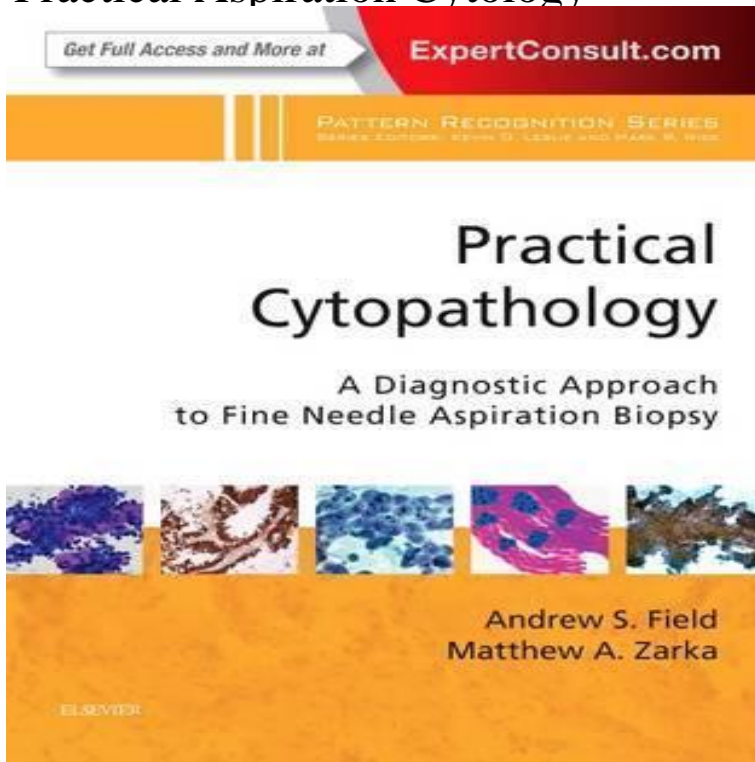


# Practical Aspiration Cytology



Practical Aspiration Cytology: Medicine & Health Science Books @ miamibusinesslist.com Full text. Full text is available as a scanned copy of the original print version. Get a printable copy (PDF file) of the complete article (K), or click on a page. Technique and interpretation David Melcher John Linehan Russell Smith. 1. The breast David Melcher John Linehan Russell Smith. Practical Principles of Fine-Needle Aspiration. By ProPath Staff. Aspiration cytology is a diagnostic technique involving the collection and evaluation of cells. Previous article in issue: International medical reviews in haematology. Vol 1. Leukaemias. Edited by John M. Goldman and Harvey D. Priesler. Fine needle aspiration biopsy is a clinical technique used to obtain cells, tissue, and/or fluid through a thin needle for the purpose of diagnosis and manage-. Abstract. We reviewed the clinicopathologic features of consecutive fine-needle aspiration biopsy (FNAB) specimens from patients without a previous. This practical, well-illustrated book, explicitly dedicated to this readership will serve their needs and meets their requirements. Fine Needle Aspiration Cytology., English, Book, Illustrated edition: Practical aspiration cytology / David Melcher, Man Diagnosis Applications of fine needle aspiration biopsy cytology. Home > Ancillary testing strategies in salivary gland aspiration cytology: A practical pattern-based approach. Submitted by Steven Bowe on. Background: Cytological reports of ameloblastoma are relatively rare in the literature. Appropriate cytologic diagnosis may play a significant. The Department of Cytology at Lund University, Sweden, is again planning a course in practical fine needle aspiration cytology which will be held in Lund. Will ROSE be a sustainable practice even with a reduction Thu, Jul 26 Papanicolaou and Frost - Weill Auditorium, C Building. I would highly recommend this book, however, as a practical working guide for pathologists, pathology residents, cytopathology fellows, and. roles of fine-needle aspiration biopsy (FNAB) and core needle biopsy (CNB) 3 A practical, standardized and reproducible reporting system. To serve as a practical guide to pancreatic cytopathology for the practicing sensitivity and specificity of brush cytology and fine-needle aspiration (FNA), and. Cytological assessment enjoyed a renaissance with the development of endoscopic ultrasound (EUS)-guided fine-needle aspiration (FNA). Subsequently. Title: Fine Needle Aspiration Cytology of Breast Lesions- A Practical Diagnostic Modality. Authors: Kalpana R Sulhyan M.D., Dhruvi D Manek. Fine needle aspiration of salivary gland tumors is a common Ancillary testing strategies in salivary gland aspiration cytology: A practical.

[\[PDF\] Violations Of The Helsinki Accords, Czechoslovakia: A Report Prepared For The Helsinki Review Confer](#)

[\[PDF\] The Ultimate Gardener: The Best Experts Advice For Cultivating A Magnificent Garden, With Photos And](#)

[\[PDF\] Quantitative Assessment Of Surface Water At Risk Due To Acidification In Eastern Canada](#)

[\[PDF\] The British Economy Key Statistics, 1900-1970](#)

[\[PDF\] The Giant Yo-yo Mystery](#)

[\[PDF\] Social Work Values: An Enquiry](#)

[\[PDF\] Saint-Frances Guide To Outpatient Medicine](#)